



PHILIPS

Monitors

Touch Monitors

Hands-on productivity
for today's digital challenges

Unlock new experiences with the power of touch

Flexible format, infinite possibilities

There is no such thing as a one-size-fits-all solution.

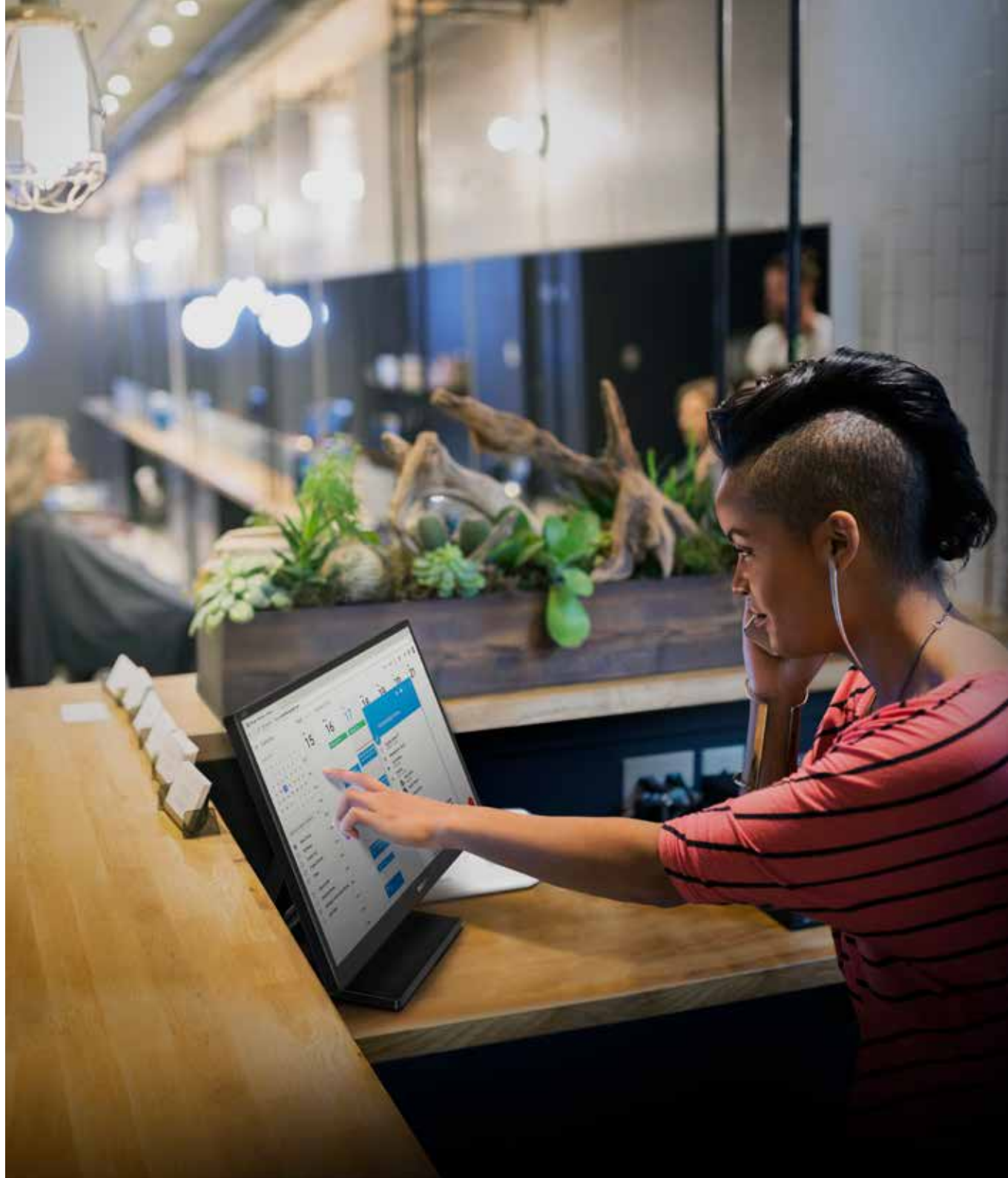
Today's professional users are dynamic multi-taskers with diverse needs who know that when it comes to getting the most out of the workday, flexibility, versatility, and mobility are the keys to success. Designed with these exacting users in mind, Philips Touch Monitors combine the power of Projected-Capacitive touch, the security of IP65 (front only) protection, the connectivity of VGA, DVI, HDMI and DP, and the flexibility of an ergonomic stand. With Philips Touch Monitors, unlimited productivity truly is at your fingertips.

Intuitive interaction

Philips Touch Monitors provide an array of innovative, user-friendly features designed to tap into the power of human touch, enabling you to interact with the screen in a straight-forward, intuitive way. Equipped with Projective-Capacitive (P-Cap) touch and stylus for smooth, simple use, these interactive displays support up to 10 points for the ultimate hands-on user experience, even in shared environments such as the classroom.

Robust, flexible design

Complementing their high-performance touch technology, Philips Touch Monitors feature advanced IP65 (front only) protection against water drops and dust infiltration. Your physical comfort is ensured as well, thanks to the adjustable SmartStand that allows you to choose the height and tilt that best suit your needs, and VESA mounting.





Versatile use scenarios

Philips Touch Monitors offer endless opportunities to maximize productivity in any number of use scenarios. Among them are Point of Sale, Point of Information, the Hospitality industry, and the Education sector:

- **Connect to Point of Sale terminal systems for easy stock management**, provide efficient customer assistance, improve the check-out experience, and more.
- **Bring dynamism and convenience to Point of Information environments** and allow people to easily obtain information at places like airports, shopping malls, train stations, and entertainment venues.
- **Enjoy better customer relations and satisfaction in the Hospitality sector**, obtain data quickly, facilitate customer-employee interaction, build loyalty, and streamline your workflow.
- **Improve the education experience for students and teachers alike**, share information, accelerate learning and development, encourage curiosity, boost IT skills, and much more.

Forward-thinking features

In addition to the power and convenience of touch technology, Philips Touch Monitors are equipped with a wide array of performance-boosting, wellness-improving features to ensure an exceptional user experience. **Full HD resolution** in selected models guarantees sharp images and brilliant colors, **SmartContrast technology** provides dynamically enhanced contrast for consistently excellent image quality, and **EasyRead mode** creates a paper-like reading experience that makes reading long documents a pleasure. And to shield you from eye fatigue, Philips Touch Monitors come equipped with **LowBlue mode** as well as **Flicker-Free technology** for more comfortable viewing.

Boundless connectivity and compatibility

Featuring **multiple connectivity options**, every Philips Touch Monitor is designed with convenience in mind. All models are equipped with multiple connectivity options including VGA, DVI, HDMI 1.4, DisplayPort 1.2, and USB 3.1 technology, as well as headphone out and PC audio in. Additionally, Philips Touch Monitor are compatible with different OS such as certain versions of Windows, Android and Linux.

Choose the touch monitors to suit your needs



242B9TL



172B9TL

PICTURE / DISPLAY		
Screen size	23.8 inch/ 60.5 cm	17 inch/ 43.2 cm
LCD Panel type	IPS (anti-glare coating)	TN (anti-glare coating)
Backlighting	WLED	WLED
Optimum resolution	1920x1080@60Hz	1280x1024@60Hz
Aspect ratio	16:9	5:4
Viewing angle (CR10)	178/178	170/160
Brightness (cd/m ²)	250	250
Contrast ratio (typical)	1000:1	1000:1
Smart Contrast ratio	50M:1	50M:1
Smart Response time (ms)	5	1
Pixel pitch (mm)	0.275 x 0.275	0.264 x 0.264 mm
Colour Gamut (NTSC/sRGB/AdobeRGB/DCI-P3)	NTSC 72%	NTSC 87%, sRGB 103%
CONNECTIVITY		
VGA / HDMI / Display Port	1 / 1 / 1	1 / 1 / 1
DVI	1	1
USB	USB 3.1x2 (1 w/fast charging)	USB 3.1x2 (1 w/fast charging)
USB-C	-	-
USB Docking	-	-
PC audio-in	Yes	Yes
Headphones out	Yes	Yes
FEATURES		
Speakers	2 W x 2	2 W x 2
Webcam / Microphone	- / -	- / -
Multi view	-	-
Blue mode	LowBlue Mode	LowBlue Mode
FlickerFree	Yes	Yes
PHYSICAL SPECS/ERGONOMICS		
Smart Ergo Base	SmartStand (Z-stand)	SmartStand (Z-stand)
Height adjustment (mm)	184 (Horizontal), 76 (Vertical)	184 (Horizontal), 76 (Vertical)
Pivot (90 degree)	Yes (by removing screws)	Yes (by removing screws)
Swivel (degree)	-	-
Tilt (degree)	-5/90	-5/90
Weight with stand (kg)	8.15	6.24
Dimensions with stand WxHxD	554 x 413 x 227 mm	376 x 399 x 227 mm
Dimension without stand WxHxD	554 x 338 x 50 mm	376 x 322 x 45 mm
VESA mount (mm)	100x100	100x100
ENERGY EFFICIENCY		
Power/Light Sensor	-	-
On mode (W)	15.68	9.14
Standby mode (W)	<0.5	<0.5
Off mode (W)	<0.3	<0.3
Power supply	External	External
APPROVALS		
Energy Star	8.0	8.0
EPEAT	Silver	Silver
TCO Certified / TCO Certified Edge	8.0 / Yes	8.0 / Yes
Safety	TUV-GS / Semko S-Mark	TUV-GS / Semko S-Mark
WHAT'S IN THE BOX		
Power cable included	1	1
VGA cable included	1	1
DVI cable included	-	-
HDMI cable included	1	1
DisplayPort cable included	1	1
Audio cable included	1	1
USB cable included	USB-A/B	USB-A/B
Other Specs	Anti-glare Coating, Projected Capacitive Touch (10 points), Glass hardness 7H, IP65 (front only), Stylus	Anti-glare Coating, Projected Capacitive Touch (10 points), Glass hardness 7H, IP65 (front only), Stylus

Choose the touch monitors to suit your needs



242B9T



222B9T



172B9T



162B9T

PICTURE / DISPLAY	242B9T	222B9T	172B9T	162B9T
Screen size	23.8 inch/ 60.5 cm	21.5 inch/ 54.6 cm	17 inch/ 43.2 cm	15.6 inch/ 39.6 cm
LCD Panel type	IPS	TN	TN	TN
Backlighting	WLED	WLED	WLED	WLED
Optimum resolution	1920x1080@60Hz	1920x1080@60Hz	1280x1024@60Hz	1366x768@60Hz
Aspect ratio	16:9	16:9	5:4	16:9
Viewing angle (CR10)	178/178	170/160	170/160	90/60
Brightness (cd/m ²)	250	250	250	220
Contrast ratio (typical)	1000:1	1000:1	1000:1	500:1
Smart Contrast ratio	50M:1	50M:1	50M:1	20M:1
Smart Response time (ms)	5	1	1	4
Pixel pitch (mm)	0.275 x 0.275	0.248 x 0.248 mm	0.264 x 0.264 mm	0.252 x 0.252 mm
Colour Gamut (NTSC/sRGB/AdobeRGB/DCI-P3)	NTSC 72%	NTSC 72%	NTSC 87%, sRGB 103%	NTSC 86%, sRGB 100%
CONNECTIVITY				
VGA / HDMI / Display Port	1 / 1 / 1	1 / 1 / 1	1 / 1 / 1	1 / 1 / 1
DVI	1	1	1	1
USB	USB 3.1x2 (1 w/fast charging)	USB 3.1x2 (1 w/fast charging)	USB 3.1x2 (1 w/fast charging)	USB 3.1x2 (1 w/fast charging)
USB-C	-	-	-	-
USB Docking	-	-	-	-
PC audio-in	Yes	Yes	Yes	Yes
Headphones out	Yes	Yes	Yes	Yes
FEATURES				
Speakers	2 W x 2	2 W x 2	2 W x 2	2 W x 2
Webcam / Microphone	- / -	- / -	- / -	- / -
Multi view	-	-	-	-
Blue mode	LowBlue Mode	LowBlue Mode	LowBlue Mode	LowBlue Mode
FlickerFree	Yes	Yes	Yes	-
PHYSICAL SPECS/ERGONOMICS				
Smart Ergo Base	SmartStand (Z-stand)	SmartStand (Z-stand)	SmartStand (Z-stand)	SmartStand (Z-stand)
Height adjustment (mm)	184 (Horizontal), 76 (Vertical)	184 (Horizontal), 76 (Vertical)	184 (Horizontal), 76 (Vertical)	"184 (Horizontal), 105 (Vertical) "
Pivot (90 degree)	Yes (by removing screws)	Yes (by removing screws)	Yes (by removing screws)	Yes (by removing screws)
Swivel (degree)	-	-	-	-
Tilt (degree)	-5/90	-5/90	-5/90	-5/90
Weight with stand (kg)	8.15	7.46	6.24	5
Dimensions with stand WxHxD	554 x 413 x 227 mm	515 x 394 x 227 mm"	376 x 399 x 227 mm	378 x 347 x 227 mm
Dimension without stand WxHxD	554 x 338 x 50 mm	515 x 317 x 45 mm	376 x 322 x 45 mm	378 x 241 x 42 mm
VESA mount (mm)	100x100	100x100	100x100	100x100
ENERGY EFFICIENCY				
Power/Light Sensor	-	-	-	-
On mode (W)	15.68	11.92	9.14	7.1
Standby mode (W)	<0.5	<0.5	<0.5	<0.5
Off mode (W)	<0.3	<0.3	<0.3	<0.3
Power supply	External	External	External	External
APPROVALS				
Energy Star	8.0	8.0	8.0	8.0
EPEAT	Silver	Silver	Silver	Silver
TCO Certified / TCO Certified Edge	8.0 / Yes	8.0 / Yes	8.0 / Yes	- / -
Safety	TUV-GS / Semko S-Mark	TUV-GS / Semko S-Mark	TUV-GS / Semko S-Mark	TUV-GS / Semko S-Mark
WHAT'S IN THE BOX				
Power cable included	1	1	1	1
VGA cable included	1	1	1	1
DVI cable included	-	-	-	-
HDMI cable included	1	1	1	1
DisplayPort cable included	1	1	1	1
Audio cable included	1	1	1	1
USB cable included	USB-A/B	USB-A/B	USB-A/C	USB-A/B
Other Specs				
	Projected Capacitive Touch (10 points), Glass hardness 7H, IP65 (front only), Stylus	Projected Capacitive Touch (10 points), Glass hardness 7H, IP65 (front only), Stylus	Projected Capacitive Touch (10 points), Glass hardness 7H, IP65 (front only), Stylus	Projected Capacitive Touch (10 points), Glass hardness 7H, IP65 (front only), Stylus

Choose the touch monitors to suit your needs



242B9TN



222B9TN



172B9TN



162B9TN

PICTURE / DISPLAY	242B9TN	222B9TN	172B9TN	162B9TN
Screen size	23.8 inch/ 60.5 cm	21.5 inch/ 54.6 cm	17 inch/ 43.2 cm	15.6 inch/ 39.6 cm
LCD Panel type	IPS	TN	TN	TN
Backlighting	WLED	WLED	WLED	WLED
Optimum resolution	1920x1080@60Hz	1920x1080@60Hz	1920x1080@60Hz	1920x1080@60Hz
Aspect ratio	16:9	16:9	5:4	16:9
Viewing angle (CR10)	178/178	170/160	170/160	90/60
Brightness (cd/m²)	250	250	250	220
Contrast ratio (typical)	1000:1	1000:1	1000:1	500:1
Smart Contrast ratio	50M:1	50M:1	50M:1	20M:1
Smart Response time (ms)	5	1	1	4
Pixel pitch (mm)	0.275 x 0.275 mm	0.248 x 0.248 mm	0.264 x 0.264 mm	0.252 x 0.252 mm
Colour Gamut (NTSC/sRGB/AdobeRGB/DCI-P3)	NTSC 72%	NTSC 72%	NTSC 87%, sRGB 103%	NTSC 86%, sRGB 100%
CONNECTIVITY				
VGA / HDMI / Display Port	1 / 1 / 1	1 / 1 / 1	1 / 1 / 1	1 / 1 / 1
DVI	1	1	1	1
USB	USB 3.1x2 (1 w/fast charging)	USB 3.1x2 (1 w/fast charging)	USB 3.1x2 (1 w/fast charging)	USB 3.1x2 (1 w/fast charging)
USB-C	-	-	-	-
USB Docking	-	-	-	-
PC audio-in	Yes	Yes	Yes	Yes
Headphones out	Yes	Yes	Yes	Yes
FEATURES				
Speakers	2 W x 2	2 W x 2	2 W x 2	2 W x 2
Webcam / Microphone	- / -	- / -	- / -	- / -
Multi view	-	-	-	-
Blue mode	LowBlue Mode	LowBlue Mode	LowBlue Mode	LowBlue Mode
FlickerFree	Yes	Yes	Yes	-
PHYSICAL SPECS/ERGONOMICS				
Smart Ergo Base	-	-	-	-
Height adjustment (mm)	-	-	-	-
Pivot (90 degree)	-	-	-	-
Swivel (degree)	-	-	-	-
Tilt (degree)	-	-	-	-
Weight with stand (kg)	4.86 (display only)	4.17 (display only)	3.26 (display only)	2.01 (display only)
Dimensions with stand WxHxD	-	-	-	-
Dimension without stand WxHxD	554 x 338 x 50 mm	515 x 317 x 45 mm	376 x 322 x 45 mm	378 x 241 x 42 mm
VESA mount (mm)	100x100	100x100	100x100	100x100
ENERGY EFFICIENCY				
Power/Light Sensor	-	-	-	-
On mode (W)	15.68	11.92	9.14	7.1
Standby mode (W)	<0.5	<0.5	<0.5	<0.5
Off mode (W)	<0.3	<0.3	<0.3	<0.3
Power supply	External	External	External	External
APPROVALS				
Energy Star	8.0	8.0	8.0	8.0
EPEAT	Silver	Silver	Silver	Silver
TCO Certified / TCO Certified Edge	8.0 / Yes	8.0 / Yes	8.0 / Yes	- / -
Safety	TUV-GS / Semko S-Mark	TUV-GS / Semko S-Mark	TUV-GS / Semko S-Mark	TUV-GS / Semko S-Mark
WHAT'S IN THE BOX				
Power cable included	1	1	1	1
VGA cable included	-	-	-	-
DVI cable included	-	-	-	-
HDMI cable included	1	1	1	1
DisplayPort cable included	-	-	-	-
Audio cable included	-	-	-	-
USB cable included	USB-A/B	USB-A/B	USB-A/B	USB-A/B
Other Specs	Projected Capacitive Touch (10 points), Glass hardness 7H, IP65 (front only)	Projected Capacitive Touch (10 points), Glass hardness 7H, IP65 (front only)	Projected Capacitive Touch (10 points), Glass hardness 7H, IP65 (front only)	Projected Capacitive Touch (10 points), Glass hardness 7H, IP65 (front only)

